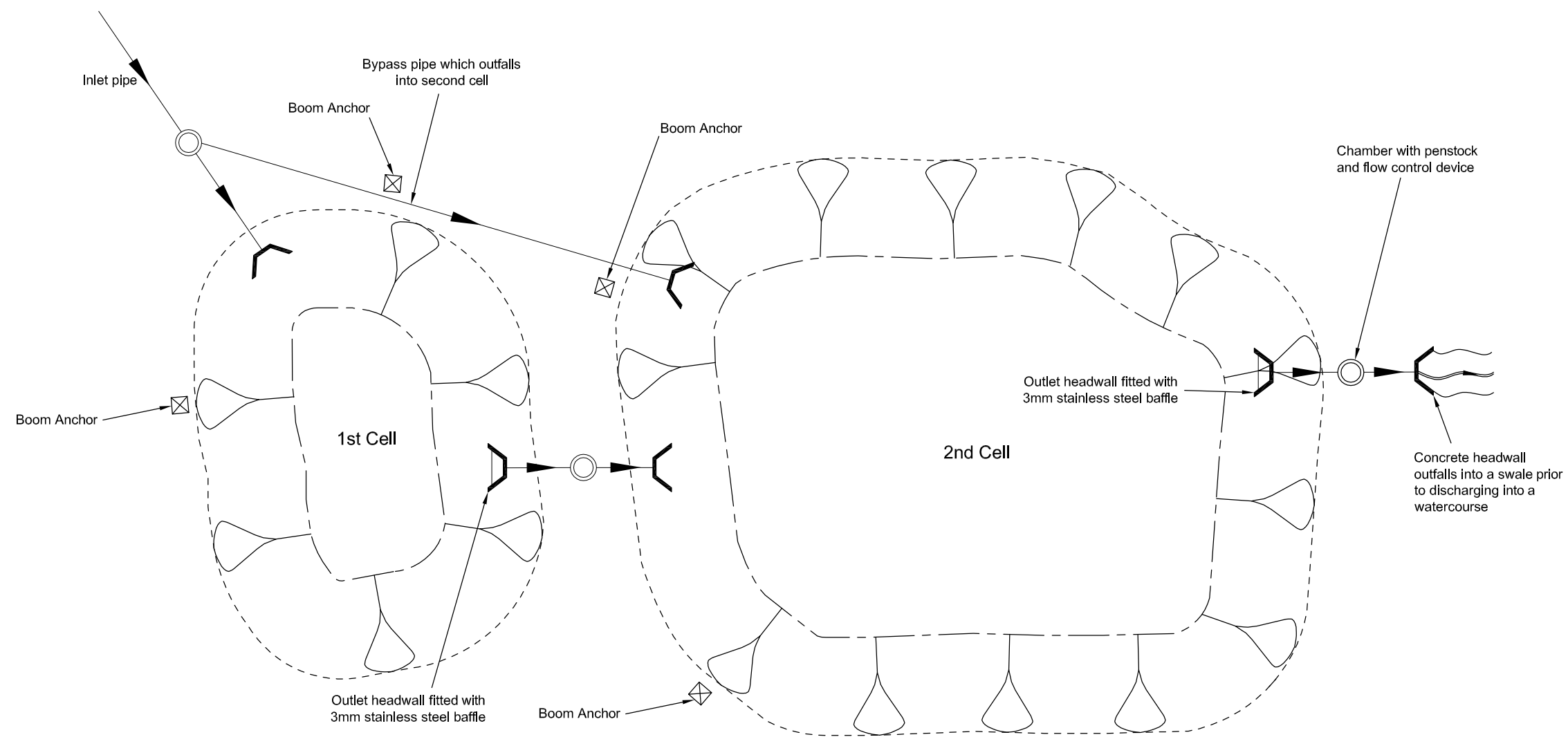
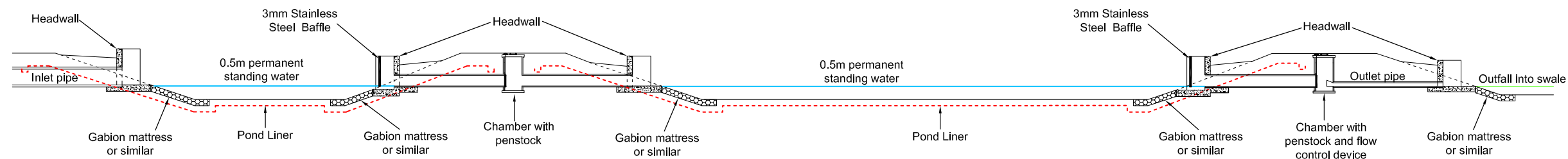


FIGURE 9.4



Typical Plan of Two Cell Pond Arrangement
Scale: Not to Scale



Typical Section
Scale: Not to Scale

NOTES

1. All measurements are in metres unless stated otherwise.
2. The plan shows an indicative two-cell pond arrangement. For the actual pond layouts and drainage networks refer to the 500 series drawings.
3. For landscaping details refer to the Environmental Master Plan.
4. The proposed stainless steel baffles at the pond outlets are provided to trap floating oils.
5. Floating booms would be deployed in the event of a pollution incident, using the anchors shown.

0	OCT 09	First Issue	RP	SH	AD	TW
Rev	Revision Date	Purpose of revision	Drawn	Check	Review	Appr'd



Project: M1 JUNCTION 19 ENVIRONMENTAL STATEMENT VOLUME 2

Drawing title: CHAPTER 9 ROAD DRAINAGE AND THE WATER ENVIRONMENT TYPICAL POND LAYOUT

Drawing status: DRAFT

Scale: NTS Do not scale

Client no.

Drawing number	Rev
FIGURE 9.4	0

This drawing is not to be used in whole or part other than for the intended purpose and project as defined on this drawing. Refer to the contract for full terms and conditions.